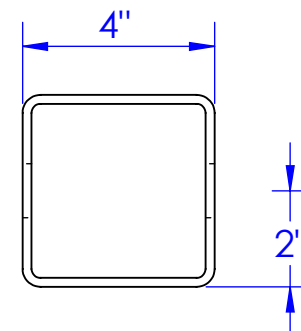
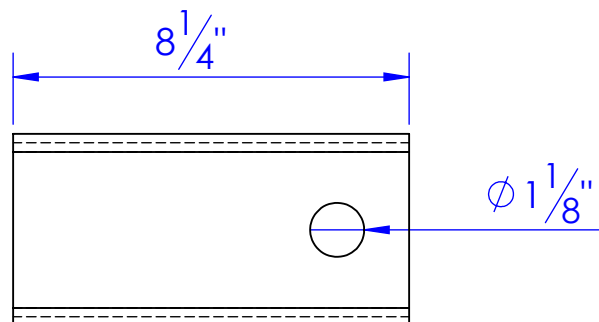
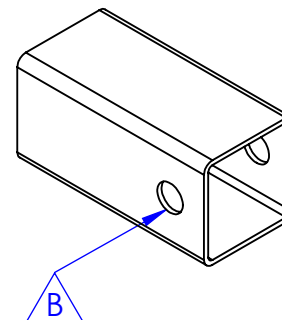
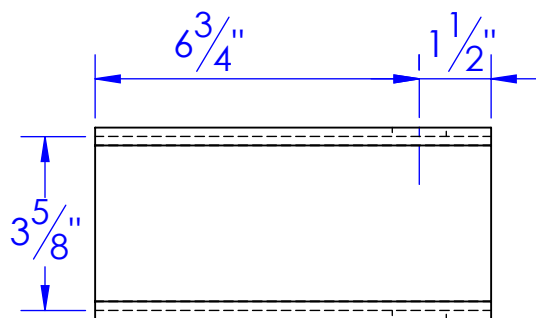


ITEM NO.	PART NUMBER	DESCRIPTION	QTY.
1	ST-ST 4X 0.1875X 8.25	ARM SLEEVE, FLKR ARM EXT. 50 SERIES	1

REV.	REVISIONS	DATE	APPROVED
	DESCRIPTION		
A	UPDATED TO NEW STANDARD DWG FROM AE-FLKR810	12/10/2012	
B	REVISED HOLE DIAMETER TO 1-1/8 FROM 1-1/16	2/15/2013	
C	REVISED TO HAVE ITS OWN DRAWING NUMBER	12/20/2022	KD



DRAWING LOCATION:

M:\Drawings\Ethan\Solidworks drawings\40 HYDRAFLKR\X500
Extension\2500 Vendor

PART LOCATION:

M:\Drawings\Heath Information\Triple C\STANDARD TC DWG 10-25-11
SOLID WORKS\SW MODELS\FP-A

PROPRIETARY AND CONFIDENTIAL
THE INFORMATION CONTAINED IN THIS
DRAWING IS THE SOLE PROPERTY OF TRIPLE
C INC. ANY REPRODUCTION IN PART OR
AS A WHOLE WITHOUT THE WRITTEN
PERMISSION OF TRIPLE C INC. IS PROHIBITED.

DIMENSIONS ARE IN INCHES
TOLERANCES:
FRACTIONAL $\pm 1/16$
ANGULAR: MACH ± 1 BEND ± 1
TWO PLACE DECIMAL ± 0.10
THREE PLACE DECIMAL ± 0.005

MATERIAL --

DO NOT SCALE DRAWING

NAME	DATE
DRAWN HEATH	12/20/2022
PART # SEE DWG #	
ASM #	
COMMENTS:	
FLAKER ARM EXTENSION, ARM SLEEVES	

P.O. BOX 248,
SABETHA, KS 66534



SIZE	DWG. NO.	REV.
A	40-2505 C	C
SCALE: 1:4	WEIGHT: --	SHEET 1 OF 1